

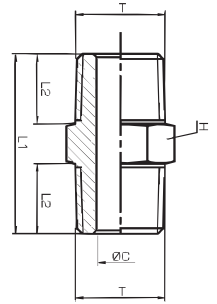


nipplo conico BSPT • nipple BSPT thread

1410



CODE	T	PN(Bar)	ØC	L1	L2	H(Hex)	Peso Weight(g)	
1410TR18	R1/8"	150	5	24	9,0	12	11,3	10
1410TR14	R1/4"	150	7	27	10,5	14	19,6	10
1410TR38	R3/8"	150	10	30	11,5	17	29,9	10
1410TR12	R1/2"	150	13	38	15,0	22	58,0	10
1410TR34	R3/4"	150	18	46	18,0	27	95,4	10

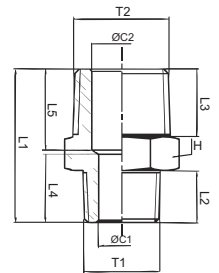


nipplo conico ridotto BSPT • reduced nipple BSPT thread

1412



CODE	T1	T2	PN(Bar)	ØC1	ØC2	L1	L2	L3	L4	L5	H(Hex)	Peso Weight(g)	
1412TR1814	R1/8"	R1/4"	150	7	5	25,5	10,5	9,0	15,00	9,9	14	15,9	10
1412TR1438	R1/4"	R3/8"	150	7	10	29,0	10,5	11,5	13,10	15,0	17	26,6	10
1412TR1412	R1/4"	R1/2"	150	7	13	33,0	10,5	15,0	13,27	18,0	22	45,3	10
1412TR3812	R3/8"	R1/2"	150	10	13	34,0	11,5	15,0	15,10	18,0	22	48,5	10
1412TR1234	R1/2"	R3/4"	150	13	18	43,0	15,0	18,0	19,60	22,0	27	87,1	10

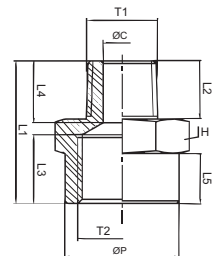


maggiorazione M conica BSPT / F Cilindrica BSPP • M BSPT thread / F BSPP thread enlarger

1420



CODE	T1	T2	PN(Bar)	ØC	ØP	L1	L2	L3	L4	L5	H(Hex)	Peso Weight(g)	
1420TR1814	R1/8"	G1/4"	150	5	16,5	22	8	11,0	9,1	8,0	17	16,2	10
1420TR1438	R1/4"	G3/8"	150	7	21,5	27,0	11	13,0	11,7	9,5	22	33,2	10
1420TR3812	R3/8"	G1/2"	150	10	26,5	30,0	11	15,0	12,4	11,5	27	54,6	10

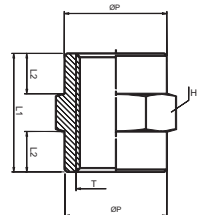


manicotto F/F cilindrico BSPP • F/F sleeve BSPP thread

1425



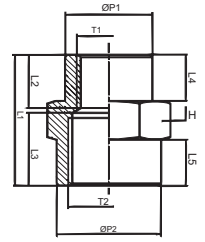
CODE	T	PN(Bar)	ØP	L1	L2	H(Hex)	Peso Weight(g)	
1425TR18	G1/8"	150	13,0	15	5,0	14	8,9	10
1425TR14	G1/4"	150	16,5	22	7,5	17	17,4	10
1425TR38	G3/8"	150	21,5	25	8,5	22	34,4	10
1425TR12	G1/2"	150	26,5	32	11,0	27	64,4	10
1425TR34	G3/4"	150	31,5	34	12,0	32	79,3	10



manicotto F/F ridotto cilindrico BSPP • reduced F/F sleeve BSPP thread

**1426**

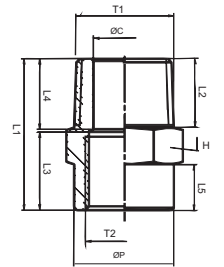

CODE	T1	T2	PN(Bar)	ØP1	ØP2	L1	L2	L3	L4	L5	H(Hex)	Peso Weight(g)	
1426TR1814	G1/8"	G1/4"	150	13,5	16,5	23,0	9,1	13	7,0	9,0	17	18,4	10
1426TR1438	G1/4"	G3/8"	150	18,0	21,5	27,0	11,0	15	9,5	9,5	22	36,2	10
1426TR1412	G1/4"	G1/2"	150	18,0	26,5	30,0	10,8	17	9,5	10,5	27	56,8	10
1426TR3812	G3/8"	G1/2"	150	21,5	26,5	30,0	11,8	17	8,0	13,0	27	61,6	10
1426TR1234	G1/2"	G3/4"	150	26,5	31,5	36,0	14,6	20	11,0	15,0	32	88,3	10



riduzione M conica BSPT / F cilindrica BSPP • M BSPT thread / F BSPP thread reducer

**1440**

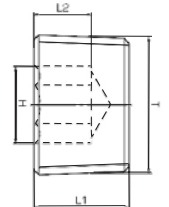

CODE	T1	T2	PN(Bar)	ØP	ØC	L1	L2	L3	L4	L5	H(Hex)	Peso Weight(g)	
1440TR1418	R1/4"	G1/8"	150	13,5	7,0	23,5	11,0	9	13,0	7,0	14	16,0	10
1440TR3814	R3/8"	G1/4"	150	16,5	10,0	26,5	11,5	12	13,1	8,0	17	23,7	10
1440TR1238	R1/2"	G3/8"	150	21,4	13,0	33,0	15,0	17	15,4	10,0	22	47,0	10



tappo M brugola conico BSPT piatto • M plug BSPT thread with exagon embedded

**1461**

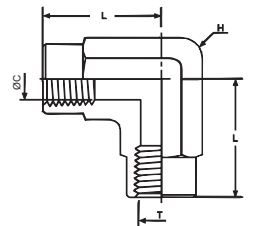

CODE	T1	PN(Bar)	L1	L2	H(Hex)	Peso Weight(g)	
1461TR18	R1/8"	150	8,2	5,0	5	3,0	10
1461TR14	R1/4"	150	10,2	6,0	6	7,4	10
1461TR38	R3/8"	150	11,6	7,0	8	14,0	10
1461TR12	R1/2"	150	13,3	8,0	10	24,5	10
1461TR34 new	R3/4"	150	15,0	9,0	12	46,4	10



gomito F/F cilindrico BSPP • F/F elbow BSPP thread

**1480**


CODE	T	PN(Bar)	ØC	L	H(Hex)	Peso Weight(g)	
1480TRH18	G1/8"	375	7,8	24,0	14,3 (9/16")	44,0	10
1480TRH14	G1/4"	380	12,0	26,8	19,1 (3/4")	73,0	10
1480TRH38	G3/8"	340	16,0	26,8	22,2 (7/8")	95,0	10
1480TRH12	G1/2"	306	12,0	30,3	27,0 (1" 1/16)	186,0	10
1480TRH34	G3/4"	238	20,0	37,2	33,3 (1" 5/16)	398,0	10
1480TRH1	G1"	265	31,0	47,5	41,3 (1" 5/8)	536,0	10

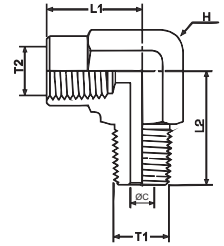


gomito M/F • M/F elbow

1485



CODE	T1	T2	PN(Bar)	ØC	L1	L2	H(Hex)	Peso Weight(g)	
1485TRH18	R1/8"	G1/8"	375	4,8	22,3	22,9	14,3 (9/16")	42,0	10
1485TRH14	R1/4"	G1/4"	380	7,0	26,7	28,3	19,1 (3/4")	73,0	10
1485TRH38	R3/8"	G3/8"	380	10,2	26,7	32,2	22,2 (7/8")	122,0	10
1485TRH12	R1/2"	G1/2"	306	12,3	30,2	39,4	27,0 (1" 1/16)	200,0	10
1485TRH34	R3/4"	G3/4"	238	15,3	36,4	40,8	33,3 (1" 5/16)	422,0	10
1485TRH1	R1"	G1"	265	22,0	48,0	48,0	41,3 (1" 5/8)	550,0	10

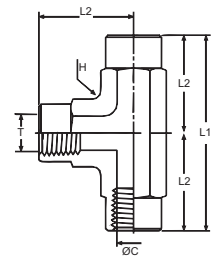


T F/E/F • F/F/F tee

1490



CODE	T	PN(Bar)	ØC	L1	L2	H(Hex)	Peso Weight(g)	
1490TRH18	G1/8"	375	8,6	43,8	21,90	14,3 (9/16")	52,0	10
1490TRH14	G1/4"	380	11,4	53,5	26,75	19,1 (3/4")	96,0	10
1490TRH38	G3/8"	340	15,0	54,0	27,00	22,2 (7/8")	117,0	10
1490TRH12	G1/2"	306	18,5	61,5	30,75	27,0 (1" 1/16)	218,0	10
1490TRH34	G3/4"	238	23,9	74,0	37,00	33,3 (1" 5/16)	460,0	10
1490TRH1	G1"	265	29,7	96,0	48,00	41,3 (1" 5/8)	637,0	10



T F/M/F • F/M/F tee

1492



CODE	T1	T2	PN(Bar)	ØC	L1	L2	L3	H(Hex)	
1492TRH18	R1/8"	G1/8"	374	4,8	52,8	26,4	22,1	14,3 (9/16")	10
1492TRH14	R1/4"	G1/4"	380	7,1	59,4	29,7	29,7	19,1 (3/4")	10
1492TRH38	R3/8"	G3/8"	340	9,6	72,1	36,1	32,0	22,2 (7/8")	10
1492TRH12	R1/2"	G1/2"	306	11,9	79,2	39,6	39,6	27,0 (1" 1/16)	10

