

## RACCORDI STANDARD IN OTTONE • *brass standard fittings*

### LEGENDA CODICE • *Model designation*

1200TR

↓  
Codice  
Code

M5

↓  
Filetto  
thread size

| Metrico<br><i>Metric thread</i> |    |
|---------------------------------|----|
| M5                              | M5 |

| Conico BSPT<br><i>BSPT thread</i> |        |
|-----------------------------------|--------|
| 18                                | R 1/8" |
| 14                                | R 1/4" |
| 38                                | R 3/8" |
| 12                                | R 1/2" |
| 34                                | R 3/4" |
| 1                                 | R 1"   |

| Cilindrico BSPP<br><i>BSPP thread</i> |        |
|---------------------------------------|--------|
| 18                                    | G 1/8" |
| 14                                    | G 1/4" |
| 38                                    | G 3/8" |
| 12                                    | G 1/2" |
| 34                                    | G 3/4" |
| 1                                     | G 1"   |



### DATI TECNICI

|                           |   |
|---------------------------|---|
| Applicazioni              | Circuiti Pneumatici,<br>Oleodinamici ed Idraulici   |
| Materiali utilizzati      | Ottone Nichelato  |
| Filettature               | Gas Conica BSPT<br>Gas Cilindrica BSPP  |
| Pressione d'esercizio max | 60 BAR<br>Pressione e temperatura d'esercizio sono comunque determinate dal tipo di tubo impiegato, pertanto tali valori sono da definire in base alle caratteristiche del tubo stesso. |

### Technical specifications

|                             |   |
|-----------------------------|---|
| <i>applications</i>         | <i>pneumatic and hydraulic systems</i>  |
| <i>materials used</i>       | <i>brass nickel plated</i>  |
| <i>threads</i>              | <i>taper gas BSPT<br/>cylindrical gas BSPP<br/>metric</i>   |
| <i>max working pressure</i> | <i>60 BAR<br/>Pressure &amp; temperature depend on the tube used, so their values will be defined according to the features of the tube itself.</i> |

Prodotti conformi alla direttiva 2002/95/EC **RoHS**

products in conformity with the directive 2002/95/EC **RoHS**

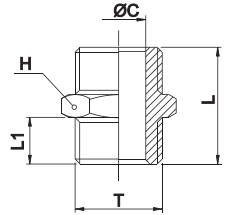
**Disponibile su richiesta la nichelatura alimentare NSF con suffisso -HF  
available on demand NSF nickel plating coating with -HF into the code**

nipplo cilindrico BSPP • nipple BSPP thread

1105



| CODE     | T     | ØC   | L    | L1 | H (Hex) | Peso Weight(g) |     |
|----------|-------|------|------|----|---------|----------------|-----|
| 1105TRM5 | M5    | 2,5  | 11,0 | 4  | 8       | 1,0            | 100 |
| 1105TR18 | G1/8" | 6,0  | 18,5 | 7  | 14      | 9,0            | 100 |
| 1105TR14 | G1/4" | 8,5  | 21,0 | 8  | 17      | 15,0           | 100 |
| 1105TR38 | G3/8" | 11,5 | 23,0 | 9  | 19      | 21,0           | 100 |
| 1105TR12 | G1/2" | 15,0 | 25,0 | 10 | 24      | 34,0           | 50  |
| 1105TR34 | G3/4" | 20,0 | 27,5 | 11 | 30      | 53,0           | 50  |
| 1105TR1  | G1"   | 26,0 | 32,0 | 13 | 36      | 84,0           | 25  |

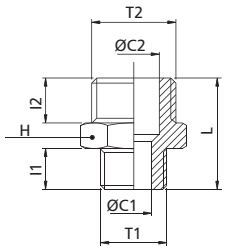


nipplo cilindrico ridotto BSPP • reduced nipple BSPP thread

1107



| CODE       | T1    | T2    | ØC1  | ØC2  | I1   | I2   | L    | H (Hex) | Peso Weight(g) |     |
|------------|-------|-------|------|------|------|------|------|---------|----------------|-----|
| 1107TRM518 | M5    | G1/8" | 2,5  | 6,0  | 5,0  | 6,5  | 15,5 | 14      | 7,0            | 100 |
| 1107TR1814 | G1/8" | G1/4" | 5,5  | 8,5  | 6,5  | 8,0  | 19,0 | 17      | 14,0           | 100 |
| 1107TR1838 | G1/8" | G3/8" | 5,5  | 11,5 | 6,5  | 9,0  | 20,5 | 19      | 19,0           | 100 |
| 1107TR1438 | G1/4" | G3/8" | 8,5  | 11,5 | 8,0  | 9,0  | 22,0 | 19      | 19,0           | 100 |
| 1107TR1412 | G1/4" | G1/2" | 8,0  | 15,0 | 9,0  | 10,0 | 24,5 | 24      | 35,0           | 100 |
| 1107TR3812 | G3/8" | G1/2" | 11,0 | 15,0 | 9,0  | 10,0 | 24,5 | 24      | 36,0           | 50  |
| 1107TR3834 | G3/8" | G3/4" | 11,0 | 20,0 | 10,0 | 11,0 | 26,5 | 30      | 52,0           | 50  |
| 1107TR1234 | G1/2" | G3/4" | 15,0 | 20,0 | 11,0 | 11,0 | 27,5 | 30      | 52,0           | 50  |
| 1107TR341  | G3/4" | G1"   | 20,0 | 25,5 | 11,0 | 13,0 | 30,0 | 36      | 71,0           | 25  |

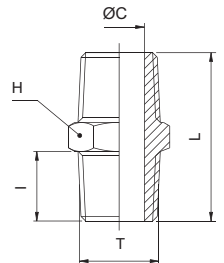


nipplo conico BSPT • nipple BSPT thread

1110



| CODE     | T     | ØC   | I    | L    | H (Hex) | Peso Weight(g) |     |
|----------|-------|------|------|------|---------|----------------|-----|
| 1110TR18 | R1/8" | 6,0  | 7,5  | 19,0 | 12      | 7,0            | 100 |
| 1110TR14 | R1/4" | 7,5  | 11,0 | 26,5 | 14      | 16,0           | 100 |
| 1110TR38 | R3/8" | 11,5 | 11,0 | 27,0 | 17      | 23,0           | 100 |
| 1110TR12 | R1/2" | 15,0 | 12,5 | 30,5 | 22      | 79,0           | 50  |
| 1110TR34 | R3/4" | 20,0 | 14,0 | 34,5 | 27      | 61,0           | 50  |
| 1110TR1  | R1"   | 26,0 | 15,5 | 37,0 | 34      | 92,0           | 25  |

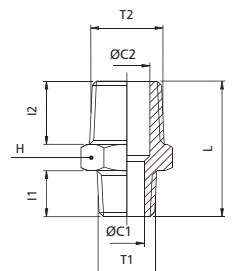


nipplo conico ridotto BSPT • reduced nipple BSPT thread

1112



| CODE       | T1    | T2    | ØC1  | ØC2  | I1   | I2   | L    | H (Hex) | Peso Weight(g) |     |
|------------|-------|-------|------|------|------|------|------|---------|----------------|-----|
| 1112TR1814 | R1/8" | R1/4" | 5,5  | 8,5  | 7,5  | 11,0 | 23,0 | 14      | 12,0           | 100 |
| 1112TR1838 | R1/8" | R3/8" | 5,5  | 11,5 | 7,5  | 11,0 | 23,5 | 17      | 19,0           | 100 |
| 1112TR1438 | R1/4" | R3/8" | 8,5  | 11,5 | 10,5 | 11,0 | 26,5 | 17      | 21,0           | 100 |
| 1112TR1412 | R1/4" | R1/2" | 8,0  | 15,0 | 10,5 | 12,5 | 28,5 | 22      | 32,0           | 100 |
| 1112TR3812 | R3/8" | R1/2" | 11,0 | 15,0 | 10,5 | 12,5 | 28,5 | 22      | 35,0           | 50  |
| 1112TR1234 | R1/2" | R3/4" | 15,0 | 20,0 | 12,5 | 14,0 | 32,5 | 27      | 58,0           | 50  |
| 1112TR341  | R3/4" | R1"   | 20,0 | 25,5 | 13,0 | 15,5 | 35,5 | 34      | 91,0           | 25  |

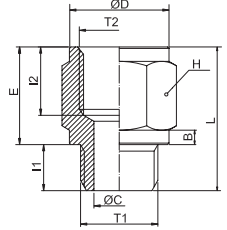


maggiorazione M/F cilindrica BSPP • *M/F BSPP thread enlarger*

1115



| CODE       | T1    | T2    | B   | Ø C  | Ø D  | I1   | I2   | E    | L    | H(Hex) | Peso Weight(g) |     |
|------------|-------|-------|-----|------|------|------|------|------|------|--------|----------------|-----|
| 1115TRM5   | M5    | M5    | 1,5 | 2,5  | 7,5  | 4,5  | 5,0  | 6,5  | 11,0 | 8      | 1,0            | 100 |
| 1115TRM518 | M5    | G1/8" | 2,0 | 2,2  | 13,5 | 5,0  | 7,0  | 11,0 | 16,0 | 14     | 10,0           | 100 |
| 1115TRM618 | M6    | G1/8" | 2,0 | 2,7  | 13,5 | 6,0  | 7,0  | 11,0 | 17,0 | 14     | 10,0           | 100 |
| 1115TR18   | G1/8" | G1/8" | 2,0 | 5,5  | 13,5 | 6,5  | 8,0  | 11,0 | 17,5 | 14     | 11,0           | 100 |
| 1115TR1814 | G1/8" | G1/4" | 2,0 | 5,5  | 16,5 | 6,5  | 10,5 | 13,5 | 20,0 | 17     | 18,0           | 100 |
| 1115TR1838 | G1/8" | G3/8" | 2,5 | 5,5  | 21,5 | 6,5  | 10,5 | 14,0 | 20,5 | 22     | 33,0           | 100 |
| 1115TR14   | G1/4" | G1/4" | 2,0 | 8,5  | 16,5 | 8,0  | 10,5 | 13,5 | 21,5 | 17     | 19,0           | 100 |
| 1115TR1438 | G1/4" | G3/8" | 2,5 | 8,0  | 21,5 | 9,0  | 10,5 | 14,0 | 23,0 | 22     | 32,0           | 100 |
| 1115TR1412 | G1/4" | G1/2" | 3,0 | 8,0  | 26,5 | 9,0  | 12,5 | 17,0 | 26,0 | 27     | 51,0           | 100 |
| 1115TR38   | G3/8" | G3/8" | 2,5 | 11,0 | 21,5 | 9,0  | 10,5 | 14,0 | 23,0 | 22     | 32,0           | 100 |
| 1115TR3812 | G3/8" | G1/2" | 3,0 | 11,0 | 26,5 | 9,0  | 12,5 | 17,0 | 26,0 | 27     | 54,0           | 50  |
| 1115TR3834 | G3/8" | G3/4" | 3,0 | 11,0 | 31,5 | 9,0  | 12,5 | 17,0 | 26,0 | 32     | 66,0           | 50  |
| 1115TR12   | G1/2" | G1/2" | 3,0 | 15,0 | 26,5 | 10,5 | 12,5 | 16,0 | 26,5 | 27     | 56,0           | 50  |
| 1115TR1234 | G1/2" | G3/4" | 3,0 | 15,0 | 31,5 | 10,5 | 12,5 | 17,0 | 27,5 | 32     | 71,0           | 50  |
| 1115TR121  | G1/2" | G1"   | 3,0 | 15,0 | 37,5 | 11,0 | 12,5 | 18,0 | 29,0 | 38     | 93,0           | 50  |
| 1115TR34   | G3/4" | G3/4" | 3,0 | 20,0 | 31,5 | 10,5 | 12,5 | 17,0 | 27,5 | 32     | 69,0           | 50  |
| 1115TR341  | G3/4" | G1"   | 3,0 | 20,0 | 37,5 | 11,0 | 12,5 | 18,0 | 29,0 | 38     | 93,0           | 25  |
| 1115TR1    | G1"   | G1"   | 3,0 | 26,0 | 37,5 | 13,0 | 12,5 | 18,0 | 31,0 | 38     | 96,0           | 25  |

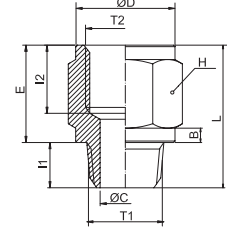


maggiorazione M conica BSPT / F cilindrica BSPP • *M BSPT thread / F BSPP thread enlarger*

1120



| CODE       | T1    | T2    | B   | Ø C  | Ø D  | I1   | I2   | E    | L    | H(Hex) | Peso Weight(g) |     |
|------------|-------|-------|-----|------|------|------|------|------|------|--------|----------------|-----|
| 1120TR18   | R1/8" | G1/8" | 2,0 | 5,5  | 13,5 | 7,5  | 8    | 11,0 | 18,5 | 14     | 12,0           | 100 |
| 1120TR1814 | R1/8" | G1/4" | 2,0 | 5,5  | 16,5 | 7,5  | 10,5 | 13,5 | 21,0 | 17     | 18,0           | 100 |
| 1120TR1838 | R1/8" | G3/8" | 2,5 | 5,5  | 21,5 | 7,5  | 10,5 | 14,0 | 21,5 | 22     | 31,0           | 100 |
| 1120TR14   | R1/4" | G1/4" | 2,0 | 8,5  | 16,5 | 10,5 | 10,5 | 13,5 | 24,0 | 17     | 18,0           | 100 |
| 1120TR1438 | R1/4" | G3/8" | 2,5 | 8,0  | 21,5 | 10,5 | 10,5 | 14,0 | 24,5 | 22     | 32,0           | 100 |
| 1120TR1412 | R1/4" | G1/2" | 3,0 | 8,0  | 26,5 | 10,5 | 12,5 | 17,0 | 27,5 | 27     | 52,0           | 100 |
| 1120TR38   | R3/8" | G3/8" | 2,5 | 11,0 | 21,5 | 10,5 | 10,5 | 14,0 | 24,5 | 22     | 37,0           | 100 |
| 1120TR3812 | R3/8" | G1/2" | 3,0 | 11,0 | 26,5 | 10,5 | 12,5 | 17,0 | 27,5 | 27     | 55,0           | 50  |
| 1120TR3834 | R3/8" | G3/4" | 3,0 | 11,0 | 31,5 | 11,0 | 12,5 | 17,0 | 28,0 | 32     | 74,0           | 50  |
| 1120TR12   | R1/2" | G1/2" | 3,0 | 15,0 | 26,5 | 12,5 | 12,5 | 16,0 | 28,5 | 27     | 54,0           | 50  |
| 1120TR1234 | R1/2" | G3/4" | 3,0 | 15,0 | 31,5 | 12,5 | 12,5 | 17,0 | 29,5 | 32     | 70,0           | 50  |
| 1120TR121  | R1/2" | G1"   | 3,0 | 15,0 | 37,5 | 13,0 | 12,5 | 18,0 | 31,0 | 38     | 91,0           | 25  |
| 1120TR34   | R3/4" | G3/4" | 3,0 | 20,0 | 31,5 | 13,0 | 12,5 | 17,0 | 30,0 | 32     | 74,0           | 50  |
| 1120TR341  | R3/4" | G1"   | 3,0 | 20,0 | 37,5 | 13,0 | 12,5 | 18,0 | 31,0 | 38     | 97,0           | 25  |
| 1120TR1    | R1"   | G1"   | 3,0 | 26,0 | 37,5 | 15,5 | 12,5 | 18,0 | 33,5 | 38     | 100,0          | 25  |

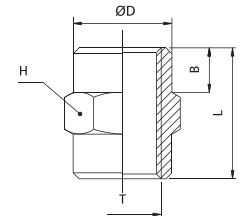


manicotto F/F cilindrico BSPP • *F/F sleeve BSPP thread*

1125



| CODE     | T     | Ø D  | B    | L    | H (Hex) | Peso Weight(g) |     |
|----------|-------|------|------|------|---------|----------------|-----|
| 1125TRM5 | M5    | 7,5  | 3,5  | 11,0 | 8       | 1,0            | 100 |
| 1125TR18 | G1/8" | 13,5 | 5,0  | 15,0 | 14      | 10,0           | 100 |
| 1125TR14 | G1/4" | 16,5 | 8,0  | 22,0 | 17      | 18,0           | 100 |
| 1125TR38 | G3/8" | 21,5 | 8,5  | 24,0 | 22      | 37,0           | 100 |
| 1125TR12 | G1/2" | 26,5 | 10,0 | 29,0 | 27      | 62,0           | 50  |
| 1125TR34 | G3/4" | 31,5 | 10,0 | 29,0 | 32      | 70,0           | 50  |
| 1125TR1  | G1"   | 37,5 | 11,0 | 31,0 | 38      | 89,0           | 25  |

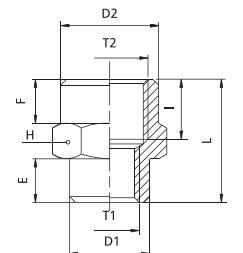


manicotto F/F ridotto cilindrico BSPP • *reduced F/F sleeve BSPP thread*

1126



| CODE       | T1    | T2    | ØD1  | ØD2  | I    | E   | F    | L    | H(Hex) | Peso Weight(g) |     |
|------------|-------|-------|------|------|------|-----|------|------|--------|----------------|-----|
| 1126TRM518 | M5    | G1/8" | 8,0  | 13,5 | 7,0  | 3,5 | 4,5  | 12,5 | 14     | 9,0            | 100 |
| 1126TR1814 | G1/8" | G1/4" | 13,0 | 16,5 | 11,0 | 6,0 | 8,0  | 20,0 | 17     | 18,0           | 100 |
| 1126TR1838 | G1/8" | G3/8" | 14,0 | 21,5 | 11,0 | 6,0 | 8,0  | 20,0 | 22     | 28,0           | 100 |
| 1126TR1438 | G1/4" | G3/8" | 17,0 | 21,5 | 11,0 | 7,0 | 8,0  | 21,0 | 22     | 30,0           | 100 |
| 1126TR1412 | G1/4" | G1/2" | 17,0 | 26,5 | 13,0 | 8,0 | 9,0  | 24,0 | 27     | 46,0           | 50  |
| 1126TR3812 | G3/8" | G1/2" | 21,5 | 26,5 | 13,0 | 8,0 | 9,0  | 24,0 | 27     | 48,0           | 50  |
| 1126TR3834 | G3/8" | G3/4" | 21,0 | 31,5 | 13,5 | 8,0 | 10,0 | 25,0 | 32     | 64,0           | 50  |
| 1126TR1234 | G1/2" | G3/4" | 26,0 | 31,5 | 13,5 | 8,0 | 10,0 | 25,0 | 32     | 65,0           | 50  |
| 1126TR121  | G1/2" | G1"   | 26,0 | 37,0 | 14,0 | 8,0 | 10,0 | 25,0 | 38     | 84,0           | 25  |
| 1126TR341  | G3/4" | G1"   | 32,0 | 37,0 | 14,0 | 8,0 | 10,0 | 25,0 | 38     | 83,0           | 25  |

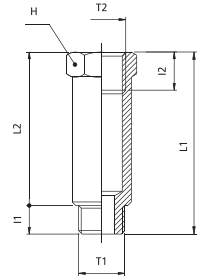


prolunga M/F cilindrica BSPP • M/F extension BSPP thread

1130



| CODE         | T1    | T2    | I1 | I2   | L1 | L2 | H (Hex) | Peso Weight(g) |     |
|--------------|-------|-------|----|------|----|----|---------|----------------|-----|
| 1130TR181422 | G1/8" | G1/8" | 6  | 8,0  | 22 | 16 | 14      | 14,0           | 100 |
| 1130TR181442 | G1/8" | G1/8" | 6  | 8,0  | 42 | 36 | 14      | 30,0           | 100 |
| 1130TR181451 | G1/8" | G1/8" | 6  | 8,0  | 51 | 45 | 14      | 36,0           | 100 |
| 1130TR141735 | G1/4" | G1/4" | 8  | 11,0 | 35 | 27 | 17      | 32,0           | 100 |
| 1130TR141751 | G1/4" | G1/4" | 8  | 11,0 | 51 | 43 | 17      | 46,0           | 50  |

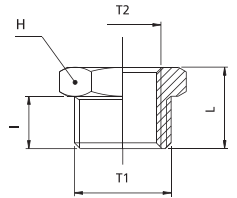


riduzione M/F cilindrica BSPP • M/F reducer BSPP thread

1135



| CODE       | T1    | T2    | I    | L    | H (Hex) | Peso Weight(g) |     |
|------------|-------|-------|------|------|---------|----------------|-----|
| 1135TRM518 | G1/8" | M5    | 6,5  | 10,5 | 14      | 7,0            | 100 |
| 1135TR1418 | G1/4" | G1/8" | 8,0  | 12,5 | 17      | 10,0           | 100 |
| 1135TR3818 | G3/8" | G1/8" | 9,0  | 14,0 | 19      | 18,0           | 100 |
| 1135TR3814 | G3/8" | G1/4" | 9,0  | 14,0 | 19      | 13,0           | 100 |
| 1135TR1218 | G1/2" | G1/8" | 10,0 | 15,0 | 24      | 39,0           | 100 |
| 1135TR1214 | G1/2" | G1/4" | 10,0 | 15,0 | 24      | 32,0           | 100 |
| 1135TR1238 | G1/2" | G3/8" | 10,0 | 15,0 | 24      | 21,0           | 100 |
| 1135TR3414 | G3/4" | G1/4" | 11,0 | 16,5 | 30      | 64,0           | 50  |
| 1135TR3438 | G3/4" | G3/8" | 11,0 | 16,5 | 30      | 52,0           | 50  |
| 1135TR3412 | G3/4" | G1/2" | 11,0 | 16,5 | 30      | 36,0           | 50  |
| 1135TR138  | G1"   | G3/8" | 13,5 | 19,5 | 36      | 110,0          | 25  |
| 1135TR112  | G1"   | G1/2" | 13,0 | 19,0 | 36      | 90,0           | 25  |
| 1135TR134  | G1"   | G3/4" | 13,0 | 19,0 | 36      | 59,0           | 25  |

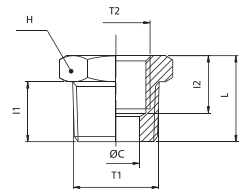


riduzione M conica BSPT / F cilindrica BSPP • M BSPT thread / F BSPP thread reducer

1140



| CODE       | T1    | T2    | ØC   | I1   | I2   | L    | H (Hex) | Peso Weight(g) |     |
|------------|-------|-------|------|------|------|------|---------|----------------|-----|
| 1140TR1418 | R1/4" | G1/8" | 6,0  | 11,0 | 9,0  | 15,5 | 14      | 9,0            | 100 |
| 1140TR3818 | R3/8" | G1/8" | 6,5  | 11,0 | 9,0  | 15,5 | 17      | 21,0           | 100 |
| 1140TR3814 | R3/8" | G1/4" | 8,5  | 11,0 | 11,0 | 15,5 | 17      | 13,0           | 100 |
| 1140TR1218 | R1/2" | G1/8" | 6,0  | 12,5 | 10,0 | 18,0 | 22      | 42,0           | 100 |
| 1140TR1214 | R1/2" | G1/4" | 8,5  | 12,5 | 11,5 | 18,0 | 22      | 34,0           | 100 |
| 1140TR1238 | R1/2" | G3/8" | 11,5 | 12,5 | 11,5 | 18,0 | 22      | 25,0           | 100 |
| 1140TR3414 | R3/4" | G1/4" | 8,5  | 14,0 | 12,0 | 20,0 | 27      | 74,0           | 50  |
| 1140TR3438 | R3/4" | G3/8" | 11,5 | 14,0 | 12,0 | 20,0 | 27      | 62,0           | 50  |
| 1140TR3412 | R3/4" | G1/2" | 15,0 | 14,0 | 14,0 | 20,0 | 27      | 43,0           | 50  |
| 1140TR138  | R1"   | G3/8" | 15,0 | 15,5 | 13,0 | 21,5 | 34      | 123,0          | 25  |
| 1140TR112  | R1"   | G1/2" | 15,0 | 15,5 | 14,0 | 21,5 | 34      | 104,0          | 25  |
| 1140TR134  | R1"   | G3/4" | 20,0 | 15,5 | 14,0 | 21,5 | 34      | 73,0           | 25  |

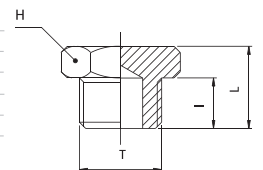


tappo M cilindrico BSPP • M plug BSPP thread

1145



| CODE     | T     | I    | L    | H (Hex) | Peso Weight(g) |     |
|----------|-------|------|------|---------|----------------|-----|
| 1145TRM5 | M5    | 4,5  | 7,5  | 8       | 4              | 100 |
| 1145TR18 | G1/8" | 6,0  | 10,0 | 14      | 7              | 100 |
| 1145TR14 | G1/4" | 8,0  | 12,5 | 17      | 12             | 100 |
| 1145TR38 | G3/8" | 9,0  | 13,5 | 19      | 19             | 100 |
| 1145TR12 | G1/2" | 10,0 | 15,0 | 24      | 28             | 100 |
| 1145TR34 | G3/4" | 11,0 | 16,5 | 30      | 46             | 50  |
| 1145TR1  | G1"   | 12,5 | 18,5 | 36      | 79             | 25  |



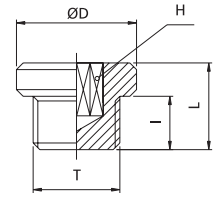
RACCORDI STANDARD IN OTTONE • *brass standard fittings*

tappo M cilindrico BSPP con brugola • *M plug BSPP thread with exagon embedded*

**1148**



| CODE     | T     | I  | L    | Ø D  | H (Hex) | Peso Weight(g) |     |
|----------|-------|----|------|------|---------|----------------|-----|
| 1148TRM5 | M5    | 4  | 6,5  | 8,0  | 2,5     | 2,0            | 100 |
| 1148TR18 | G1/8" | 6  | 10,0 | 15,0 | 5       | 8,0            | 100 |
| 1148TR14 | G1/4" | 8  | 12,0 | 18,0 | 6       | 12,0           | 100 |
| 1148TR38 | G3/8" | 9  | 13,0 | 21,0 | 8       | 22,0           | 100 |
| 1148TR12 | G1/2" | 10 | 14,5 | 25,0 | 10      | 36,0           | 100 |

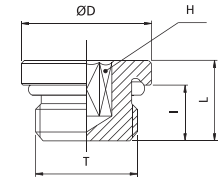


tappo M cilindrico BSPP con brugola e OR • *M plug BSPP thread with exagon embedded and OR*

**1149**



| CODE     | T     | I    | L    | Ø D  | H (Hex) | Peso Weight(g) |     |
|----------|-------|------|------|------|---------|----------------|-----|
| 1149TRM5 | M5    | 4,5  | 7,2  | 8,0  | 2,5     | 1,4            | 100 |
| 1149TR18 | G1/8" | 6,5  | 9,5  | 14,0 | 5       | 6,0            | 100 |
| 1149TR14 | G1/4" | 8,0  | 11,5 | 17,0 | 6       | 12,0           | 100 |
| 1149TR38 | G3/8" | 9,0  | 12,5 | 20,0 | 8       | 18,0           | 100 |
| 1149TR12 | G1/2" | 10,0 | 14,0 | 26,0 | 10      | 32,0           | 100 |

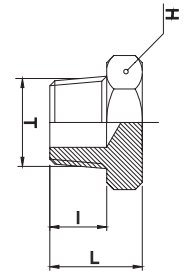


tappo M conico BSPT • *M plug BSPT thread*

**1150**



| CODE     | T     | I    | L    | H (Hex) | Peso Weight(g) |     |
|----------|-------|------|------|---------|----------------|-----|
| 1150TR18 | R1/8" | 7,5  | 11,5 | 10      | 4,0            | 100 |
| 1150TR14 | R1/4" | 11,0 | 15,5 | 14      | 9,0            | 100 |
| 1150TR38 | R3/8" | 11,0 | 16,0 | 17      | 17,0           | 100 |
| 1150TR12 | R1/2" | 12,0 | 17,5 | 22      | 29,0           | 100 |
| 1150TR34 | R3/4" | 13,5 | 19,5 | 27      | 60,0           | 50  |
| 1150TR1  | R1"   | 15,5 | 22,0 | 34      | 92,0           | 25  |

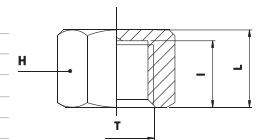


tappo F cilindrico BSPP • *F plug BSPP thread*

**1155**



| CODE     | T     | I    | L    | H (Hex) | Peso Weight(g) |     |
|----------|-------|------|------|---------|----------------|-----|
| 1155TRM5 | M5    | 5,5  | 7,0  | 8       | 1,0            | 100 |
| 1155TR18 | G1/8" | 9,0  | 11,0 | 14      | 5,0            | 100 |
| 1155TR14 | G1/4" | 11,0 | 13,0 | 17      | 17,0           | 100 |
| 1155TR38 | G3/8" | 11,0 | 13,5 | 21      | 23,0           | 100 |
| 1155TR12 | G1/2" | 11,0 | 13,5 | 24      | 44,0           | 100 |
| 1155TR34 | G3/4" | 12,5 | 15,0 | 30      | 44,0           | 50  |
| 1155TR1  | G1"   | 12,5 | 15,0 | 38      | 56,0           | 25  |

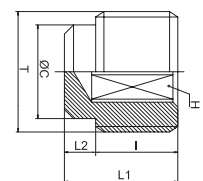


tappo M brugola cilindrico BSPP con invito • *M plug BSPP thread with exagon embedded*

**1160**



| CODE     | T     | I   | ØC   | L1   | L2  | H (Hex) | Peso Weight(g) |     |
|----------|-------|-----|------|------|-----|---------|----------------|-----|
| 1160TR18 | G1/8" | 4,0 | 8,0  | 7,0  | 3,0 | 5       | 2,0            | 100 |
| 1160TR14 | G1/4" | 6,0 | 10,5 | 10,0 | 4,0 | 6       | 6,0            | 100 |
| 1160TR38 | G3/8" | 6,0 | 13,5 | 10,0 | 4,0 | 8       | 10,0           | 50  |
| 1160TR12 | G1/2" | 6,5 | 17,5 | 11,0 | 4,0 | 10      | 13,0           | 50  |

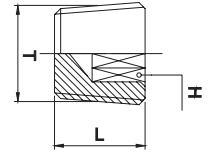


tappo M brugola conico BSPT piatto • *M flat plug BSPT thread exagon embedded*

1161



| CODE     | T     | L    | H (Hex) | Peso Weight(g) |     |
|----------|-------|------|---------|----------------|-----|
| 1161TR18 | R1/8" | 8,0  | 5       | 3,0            | 100 |
| 1161TR14 | R1/4" | 10,0 | 6       | 7,0            | 100 |
| 1161TR38 | R3/8" | 10,5 | 8       | 23,0           | 50  |
| 1161TR12 | R1/2" | 13,0 | 10      | 24,0           | 50  |

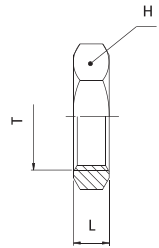


dado • *nut*

1175



| CODE     | T     | L   | H (Hex) | Peso Weight(g) |     |
|----------|-------|-----|---------|----------------|-----|
| 1175TRM5 | M5    | 2,5 | 9       | 1,0            | 100 |
| 1175TR18 | G1/8" | 3,5 | 12      | 3,0            | 100 |
| 1175TR14 | G1/4" | 4,0 | 16      | 2,0            | 100 |
| 1175TR38 | G3/8" | 4,5 | 19      | 3,0            | 50  |
| 1175TR12 | G1/2" | 4,5 | 24      | 6,0            | 50  |
| 1175TR34 | G3/4" | 5,0 | 30      | 10,0           | 25  |
| 1175TR1  | G1"   | 6,0 | 38      | 20,0           | 10  |

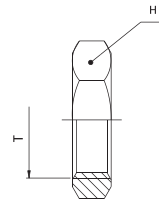


ghiera passaparete • *bulkhead lock nut*

1176



| CODE        | T       | H (Hex) |     |
|-------------|---------|---------|-----|
| 1176TRM101  | M10x1   | 14      | 100 |
| 1176TRM121  | M12x1   | 16      | 100 |
| 1176TRM1615 | M16x1,5 | 19      | 100 |
| 1176TRM1815 | M18x1,5 | 22      | 100 |
| 1176TRM2015 | M20x1,5 | 24      | 100 |
| 1176TRM2215 | M22x1,5 | 25      | 100 |
| 1176TRM2615 | M26x1,5 | 32      | 100 |
| 1176TRM2815 | M28x1,5 | 36      | 100 |



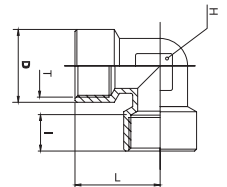
**NEW**

gomito F/F cilindrico BSPP • *F/F elbow BSPP thread*

1200



| CODE     | T     | I    | D    | L    | H (Hex) | Peso Weight(g) |     |
|----------|-------|------|------|------|---------|----------------|-----|
| 1200TRM5 | M5    | 5,5  | 9,0  | 11,0 | 8       | 6,0            | 100 |
| 1200TR18 | G1/8" | 8,0  | 13,5 | 20,5 | 10      | 19,0           | 100 |
| 1200TR14 | G1/4" | 11,5 | 16,5 | 31,0 | 13      | 33,0           | 100 |
| 1200TR38 | G3/8" | 12,0 | 21,0 | 36,0 | 17      | 57,0           | 50  |
| 1200TR12 | G1/2" | 15,0 | 26,0 | 44,0 | 21      | 109,0          | 50  |
| 1200TR34 | G3/4" | 16,5 | 32,0 | 36,5 | 25      | 144,0          | 10  |
| 1200TR1  | G1"   | 19,0 | 39,0 | 45,0 | 30      | 244,0          | 10  |

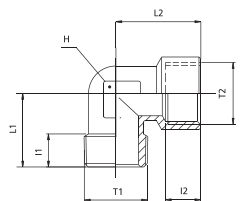


gomito M/F conico BSPP • *M/F elbow BSPT thread*

1205



| CODE     | T1    | T2    | I1   | I2   | L1   | L2   | H (Hex) | Peso Weight(g) |     |
|----------|-------|-------|------|------|------|------|---------|----------------|-----|
| 1205TRM5 | M5    | M5    | 5,0  | 5,5  | 11,5 | 11   | 8       | 7,0            | 100 |
| 1205TR18 | R1/8" | G1/8" | 9,5  | 8,0  | 17,5 | 19,5 | 10      | 16,0           | 100 |
| 1205TR14 | R1/4" | G1/4" | 11,5 | 11,5 | 24,0 | 25   | 13      | 31,0           | 100 |
| 1205TR38 | R3/8" | G3/8" | 13,0 | 12,0 | 27,5 | 27,5 | 17      | 46,0           | 50  |
| 1205TR12 | R1/2" | G1/2" | 15,0 | 15,0 | 30,0 | 33,5 | 21      | 92,0           | 50  |
| 1205TR34 | R3/4" | G3/4" | 16,0 | 16,5 | 33,0 | 36,5 | 25      | 120,0          | 10  |
| 1205TR1  | R1"   | G1"   | 17,0 | 19,0 | 39,0 | 45,0 | 30      | 212,0          | 10  |

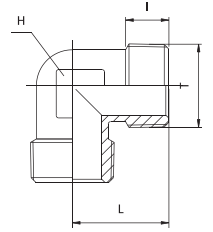


gomito M/M conico BSPT • *M/M elbow BSPT thread*

**1210**



| CODE     | T     | I    | L    | H (Hex) | Peso Weight(g) |     |
|----------|-------|------|------|---------|----------------|-----|
| 1210TRM5 | M5    | 5,0  | 13,5 | 8       | 6,0            | 100 |
| 1210TR18 | R1/8" | 9,0  | 18,5 | 10      | 13,0           | 100 |
| 1210TR14 | R1/4" | 11,5 | 22,0 | 12      | 20,0           | 100 |
| 1210TR38 | R3/8" | 13,0 | 26,0 | 13      | 31,0           | 50  |
| 1210TR12 | R1/2" | 14,0 | 28,5 | 17      | 55,0           | 50  |
| 1210TR34 | R3/4" | 16,0 | 33,0 | 25      | 100,0          | 10  |
| 1210TR1  | R1"   | 17,0 | 39,0 | 30      | 174,0          | 10  |

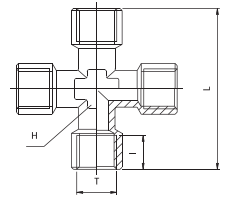


croce F/F/F/F • *F/F/F/F equal cross*

**1215**



| CODE     | T     | I    | L    | H (Hex) | Peso Weight(g) |     |
|----------|-------|------|------|---------|----------------|-----|
| 1215TR18 | G1/8" | 8,0  | 42,0 | 10      | 38,0           | 100 |
| 1215TR14 | G1/4" | 11,0 | 51,0 | 13      | 76,0           | 50  |
| 1215TR38 | G3/8" | 11,5 | 56,0 | 17      | 108,0          | 25  |
| 1215TR12 | G1/2" | 14,0 | 67,0 | 21      | 186,0          | 10  |

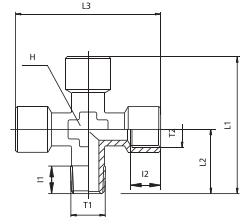


croce M/F/F/F • *M/F/F/F equal cross*

**1216**



| CODE     | T1    | T2    | I1   | I2   | L1   | L2   | L3 | H (Hex) | Peso Weight(g) |     |
|----------|-------|-------|------|------|------|------|----|---------|----------------|-----|
| 1216TR18 | R1/8" | G1/8" | 8,0  | 8,0  | 39,5 | 18,5 | 42 | 10      | 34,0           | 100 |
| 1216TR14 | R1/4" | G1/4" | 11,0 | 11,0 | 49,0 | 23,5 | 51 | 13      | 68,0           | 50  |
| 1216TR38 | R3/8" | G3/8" | 11,5 | 11,5 | 54,0 | 26,0 | 56 | 17      | 100,0          | 25  |
| 1216TR12 | R1/2" | G1/2" | 14,0 | 14,0 | 64,5 | 31,0 | 67 | 21      | 168,0          | 10  |

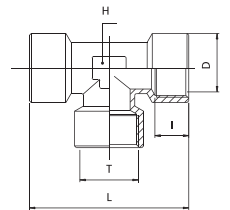


T F/F/F • *F/F/F tee*

**1220**



| CODE     | T     | I    | L    | H (Hex) | Peso Weight(g) |     |
|----------|-------|------|------|---------|----------------|-----|
| 1220TRM5 | M5    | 5,5  | 26,5 | 8       | 7,0            | 100 |
| 1220TR18 | G1/8" | 8,0  | 40,0 | 10      | 28,0           | 100 |
| 1220TR14 | G1/4" | 11,5 | 50,0 | 13      | 49,0           | 50  |
| 1220TR38 | G3/8" | 12,0 | 57,0 | 17      | 85,0           | 50  |
| 1220TR12 | G1/2" | 15,0 | 68,5 | 21      | 146,0          | 25  |
| 1220TR34 | G3/4" | 16,5 | 73,0 | 25      | 194,0          | 10  |
| 1220TR1  | G1"   | 19,0 | 90,0 | 30      | 326,0          | 10  |

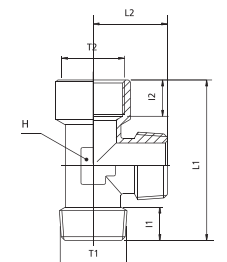


T M/M/F • *M/M/F tee*

**1225**



| CODE     | T1    | T2    | I1   | I2   | L1   | L2   | H (Hex) | Peso Weight(g) |     |
|----------|-------|-------|------|------|------|------|---------|----------------|-----|
| 1225TRM5 | M5    | M5    | 5,0  | 5,5  | 26,0 | 13,0 | 8       | 8,0            | 100 |
| 1225TR18 | R1/8" | G1/8" | 9,5  | 8,0  | 38,5 | 18,5 | 10      | 25,0           | 100 |
| 1225TR14 | R1/4" | G1/4" | 11,5 | 11,5 | 47,5 | 23,5 | 13      | 43,0           | 50  |
| 1225TR38 | R3/8" | G3/8" | 13,0 | 12,0 | 56,0 | 26,0 | 17      | 72,0           | 25  |
| 1225TR12 | R1/2" | G1/2" | 15,0 | 15,0 | 67,5 | 32,0 | 21      | 102,0          | 25  |
| 1225TR34 | R3/4" | G3/4" | 16,0 | 16,5 | 69,5 | 33,0 | 25      | 156,0          | 10  |
| 1225TR1  | R1"   | G1"   | 17,5 | 19,0 | 84,0 | 39,0 | 30      | 268,0          | 10  |



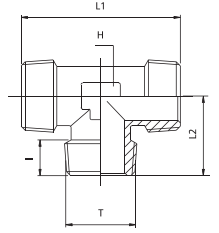


T M/M/M • M/M/M tee

1230



| CODE     | T     | I    | L1   | L2   | H (Hex) | Peso Weight(g) |
|----------|-------|------|------|------|---------|----------------|
| 1230TRM5 | M5    | 5,0  | 27,5 | 13,5 | 8       | 8,0            |
| 1230TR18 | R1/8" | 9,5  | 36,0 | 17,0 | 10      | 20,0           |
| 1230TR14 | R1/4" | 11,5 | 48,0 | 24,0 | 12      | 38,0           |
| 1230TR38 | R3/8" | 12,0 | 48,0 | 24,0 | 13      | 47,0           |
| 1230TR12 | R1/2" | 15,0 | 57,0 | 28,0 | 17      | 80,0           |
| 1230TR34 | R3/4" | 16,2 | 66,4 | 33,0 | 25      | 134,0          |
| 1230TR1  | R1"   | 17,5 | 78,0 | 39,0 | 30      | 236,0          |

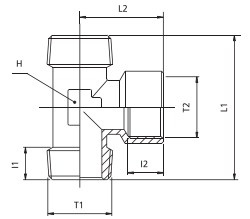


T M/F/M • M/F/M tee

1235



| CODE     | T1    | T2    | I1   | I2   | L1   | L2   | H (Hex) | Peso Weight(g) |
|----------|-------|-------|------|------|------|------|---------|----------------|
| 1235TRM5 | M5    | M5    | 5,0  | 5,5  | 27,5 | 13,0 | 8       | 6,0            |
| 1235TR18 | R1/8" | G1/8" | 9,5  | 8,0  | 36,5 | 19,5 | 10      | 22,0           |
| 1235TR14 | R1/4" | G1/4" | 11,5 | 11,5 | 48,0 | 25,5 | 13      | 37,0           |
| 1235TR38 | R3/8" | G3/8" | 13,0 | 12,0 | 51,5 | 28,0 | 17      | 62,0           |
| 1235TR12 | R1/2" | G1/2" | 15,0 | 15,0 | 63,0 | 34,0 | 21      | 118,0          |
| 1235TR34 | R3/4" | G3/4" | 16,0 | 16,5 | 66,4 | 36,5 | 25      | 156,0          |
| 1235TR1  | R1"   | G1"   | 17,5 | 19,0 | 78,0 | 45,0 | 30      | 268,0          |

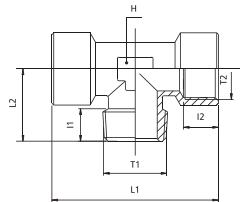


T F/M/F • F/M/F tee

1240



| CODE     | T1    | T2    | I1   | I2   | L1   | L2   | H (Hex) | Peso Weight(g) |
|----------|-------|-------|------|------|------|------|---------|----------------|
| 1240TRM5 | M5    | M5    | 5,0  | 5,5  | 26,5 | 11,5 | 8       | 9,0            |
| 1240TR18 | R1/8" | G1/8" | 9,5  | 8,0  | 40,0 | 18,5 | 10      | 22,0           |
| 1240TR14 | R1/4" | G1/4" | 11,5 | 11,5 | 50,0 | 24,5 | 13      | 49,0           |
| 1240TR38 | R3/8" | G3/8" | 13,0 | 12,0 | 57,0 | 26,5 | 17      | 75,0           |
| 1240TR12 | R1/2" | G1/2" | 15,0 | 15,0 | 68,5 | 32,0 | 21      | 127,0          |
| 1240TR34 | R3/4" | G3/4" | 16,0 | 16,5 | 73,0 | 33,0 | 25      | 178,0          |
| 1240TR1  | R1"   | G1"   | 17,5 | 19,0 | 90,0 | 39,0 | 30      | 296,0          |

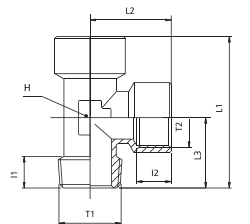


T M/F/F • M/F/F tee

1245



| CODE     | T1    | T2    | I1   | I2   | L1   | L2   | L3   | H (Hex) | Peso Weight(g) |
|----------|-------|-------|------|------|------|------|------|---------|----------------|
| 1245TRM5 | M5    | M5    | 5,0  | 5,5  | 26,0 | 13,0 | 12,0 | 8       | 9,0            |
| 1245TR18 | R1/8" | G1/8" | 9,5  | 8,0  | 38,5 | 19,5 | 18,5 | 10      | 24,0           |
| 1245TR14 | R1/4" | G1/4" | 11,5 | 11,5 | 49,0 | 25,0 | 24,0 | 13      | 44,0           |
| 1245TR38 | R3/8" | G3/8" | 13,0 | 12,0 | 54,0 | 28,5 | 25,5 | 17      | 74,0           |
| 1245TR12 | R1/2" | G1/2" | 15,0 | 15,0 | 65,5 | 34,5 | 31,0 | 21      | 132,0          |
| 1245TR34 | R3/4" | G3/4" | 16,0 | 16,5 | 69,5 | 36,5 | 33,0 | 25      | 172,0          |
| 1245TR1  | R1"   | G1"   | 17,5 | 19,0 | 84,0 | 45,0 | 39,0 | 30      | 298,0          |

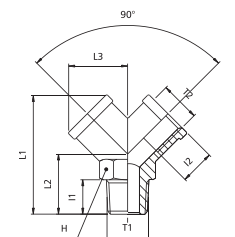


Y F/M/F • F/M/F Y

1300



| CODE     | T1    | T2    | I1   | I2   | L1   | L2 | L3   | H (Hex) | Peso Weight(g) |
|----------|-------|-------|------|------|------|----|------|---------|----------------|
| 1300TR18 | R1/8" | G1/8" | 8,0  | 8,0  | 32,0 | 16 | 14,5 | 13      | 22,0           |
| 1300TR14 | R1/4" | G1/4" | 11,0 | 11,0 | 38,0 | 20 | 18,0 | 17      | 38,0           |
| 1300TR38 | R3/8" | G3/8" | 11,5 | 11,5 | 42,5 | 22 | 20,5 | 20      | 52,0           |
| 1300TR12 | R1/2" | G1/2" | 14,0 | 14,0 | 53,0 | 27 | 26,5 | 25      | 110,0          |



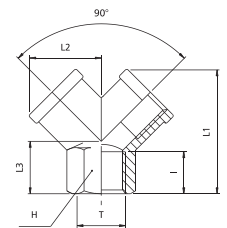


Y F/F • F/F/F Y

**1310**



| CODE     | T     | I    | L1   | L2   | L3 | H (Hex) | Peso Weight(g) |     |
|----------|-------|------|------|------|----|---------|----------------|-----|
| 1310TR18 | G1/8" | 8,0  | 26,5 | 14,5 | 12 | 13      | 18,0           | 100 |
| 1310TR14 | G1/4" | 11,0 | 32,0 | 18,0 | 14 | 17      | 32,0           | 100 |
| 1310TR38 | G3/8" | 11,5 | 37,0 | 20,5 | 16 | 20      | 44,0           | 50  |
| 1310TR12 | G1/2" | 14,0 | 45,0 | 26,5 | 19 | 25      | 92,0           | 25  |

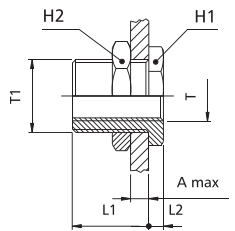


**1320**



passaparete F/F • F/F bulkhead connector

| CODE          | T     | T1      | A max | L1   | L2  | H1 (Hex) | H2 (Hex) | Peso Weight(g) |     |
|---------------|-------|---------|-------|------|-----|----------|----------|----------------|-----|
| 1320TRM5M101  | M5    | M10X1   | 7     | 10,5 | 3,5 | 14       | 14       | 12,0           | 100 |
| 1320TR18M1615 | G1/8" | M16X1,5 | 10    | 14,0 | 4,0 | 19       | 22       | 30,0           | 100 |
| 1320TR14M2015 | G1/4" | M20X1,5 | 16    | 21,0 | 4,0 | 24       | 27       | 58,0           | 50  |
| 1320TR38M2615 | G3/8" | M26X1,5 | 15    | 21,0 | 5,0 | 30       | 32       | 94,0           | 50  |
| 1320TR12M2815 | G1/2" | M28X1,5 | 21    | 27,0 | 6,0 | 32       | 36       | 116,0          | 25  |

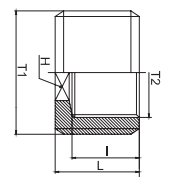


**1600**



riduzione con brugola a scomparsa • *exagon embedded reducer*

| CODE       | T1    | T2    | I    | L    | H (Hex) | Peso Weight(g) |     |
|------------|-------|-------|------|------|---------|----------------|-----|
| 1600TRM518 | G1/8" | M5    | 6,5  | 8,0  | 3       | 3,0            | 100 |
| 1600TR1418 | G1/4" | G1/8" | 7,0  | 9,0  | 6       | 7,0            | 100 |
| 1600TR3818 | G3/8" | G1/8" | 7,0  | 9,0  | 6       | 10,0           | 100 |
| 1600TR3814 | G3/8" | G1/4" | 7,0  | 9,0  | 8       | 6,0            | 100 |
| 1600TR1214 | G1/2" | G1/4" | 8,5  | 10,5 | 10      | 23,0           | 50  |
| 1600TR1238 | G1/2" | G3/8" | 8,5  | 10,5 | 10      | 10,0           | 50  |
| 1600TR3412 | G3/4" | G1/2" | 11,0 | 13,0 | 12      | 35,0           | 25  |
| 1600TR134  | G1"   | G3/4" | 12,5 | 15,0 | 17      | 38,0           | 10  |



**1255**



dado fresato • *milled nut*

| CODE        | T        |    |
|-------------|----------|----|
| 1255TR14    | 1/4"     | 10 |
| 1255TR14125 | 1/4"/125 | 10 |
| 1255TR38    | 3/8"     | 10 |

**NEW**

**1260**



intermedio a T con dadi • *union tee with milled nuts*

| CODE     | T     |    |
|----------|-------|----|
| 1260TR14 | G1/4" | 10 |

diritto maschio cilindrico BSPP con dado • *male connector BSPP thread with milled nut*
**1265**


| CODE     | T     |    |
|----------|-------|----|
| 1265TR14 | G1/4" | 10 |
| 1265TR38 | G3/8" | 10 |

 intermedio diritto con dadi • *union connector with milled nuts*
**1270**


| CODE     | T     |    |
|----------|-------|----|
| 1270TR14 | G1/4" | 10 |

 diritto femmina con dado • *female connector with milled nut*
**1290**


| CODE     | T     |    |
|----------|-------|----|
| 1290TR18 | G1/8" | 10 |
| 1290TR14 | G1/4" | 10 |
| 1290TR38 | G3/8" | 10 |

**NEW**

 gommino per attacco baionetta • *bayoned joints gasket*
**1256**


| CODE |    |
|------|----|
| 1256 | 10 |

**NEW**

 attacco baionetta cilindrico BSPP • *male bayoned joint BSPP thread*
**1280**


| CODE     | T     |    |
|----------|-------|----|
| 1280TR18 | G1/8" | 10 |
| 1280TR14 | G1/4" | 10 |
| 1280TR38 | G3/8" | 10 |

**NEW**

attacco baionetta femmina cilindrico BSPP • *female bayoned joint BSPP thread*
**1285**


| CODE     | T     |    |
|----------|-------|----|
| 1285TR18 | G1/8" | 10 |
| 1285TR14 | G1/4" | 10 |
| 1285TR38 | G3/8" | 10 |

**NEW**

 attacco baionetta portagomma con resca • *bayoned joint with barb connector*
**1288**


| CODE     | Ø Tubo |    |
|----------|--------|----|
| 1288TR6  | 6      | 10 |
| 1288TR7  | 7      | 10 |
| 1288TR8  | 8      | 10 |
| 1288TR9  | 9      | 10 |
| 1288TR10 | 10     | 10 |
| 1288TR12 | 12     | 10 |
| 1288TR14 | 14     | 10 |

**NEW**

 attacco baionetta gigante portagomma • *large bayoned joint with rubber hose connector*
**1291**


| CODE       | Ø Tubo |    |
|------------|--------|----|
| 1291BG1019 | 10x19  | 10 |
| 1291BG1020 | 10x20  | 10 |
| 1291BG1021 | 10x21  | 10 |
| 1291BG1022 | 10x22  | 10 |
| 1291BG1023 | 10x23  | 10 |
| 1291BG1319 | 13x19  | 10 |
| 1291BG1320 | 13x20  | 10 |
| 1291BG1323 | 13x23  | 10 |
| 1291BG1324 | 13x24  | 10 |
| 1291BG1325 | 13x25  | 10 |

**NEW**

 attacco baionetta portagomma • *bayoned joint with rubber hose connector*
**1275**


| CODE       | Ø Tubo |    |
|------------|--------|----|
| 1275TR610  | 6X10   | 10 |
| 1275TR612  | 6X12   | 10 |
| 1275TR613  | 6X13   | 10 |
| 1275TR614  | 6X14   | 10 |
| 1275TR716  | 7X16   | 10 |
| 1275TR812  | 8X12   | 10 |
| 1275TR813  | 8X13   | 10 |
| 1275TR815  | 8X15   | 10 |
| 1275TR817  | 8X17   | 10 |
| 1275TR1015 | 10X15  | 10 |
| 1275TR1017 | 10X17  | 10 |
| 1275TR1019 | 10X19  | 10 |

**NEW**

 diritto maschio cilindrico BSPP portagomma • *male connector BSPP thread with hose connector*
**1163**


| CODE         | Ø Tubo | T     |    |
|--------------|--------|-------|----|
| 1163TR61014  | 6x10   |       | 10 |
| 1163TR61214  | 6x12   |       | 10 |
| 1163TR61314  | 6x13   | G1/4" | 10 |
| 1163TR61414  | 6x14   |       | 10 |
| 1163TR71614  | 7x16   |       | 10 |
| 1163TR81214  | 8x12   |       | 10 |
| 1163TR81338  | 8x13   |       | 10 |
| 1163TR81538  | 8x15   |       | 10 |
| 1163TR81738  | 8x17   |       | 10 |
| 1163TR101538 | 10x15  | G3/8" | 10 |
| 1163TR101738 | 10x17  |       | 10 |
| 1163TR101938 | 10x19  |       | 10 |
| 1163TR111638 | 11x16  |       | 10 |

**NEW**

diritto femmina cilindrico BSPP portagomma  
*female connector BSPP thread with hose connector*
**1164**

**NEW**

| CODE         | Ø Tubo | T     |    |
|--------------|--------|-------|----|
| 1164TR61014  | 6x10   |       | 10 |
| 1164TR61214  | 6x12   |       | 10 |
| 1164TR61314  | 6x13   | G1/4" | 10 |
| 1164TR61414  | 6x14   |       | 10 |
| 1164TR71614  | 7x16   |       | 10 |
| 1164TR81214  | 8x12   |       | 10 |
| 1164TR81338  | 8x13   |       | 10 |
| 1164TR81538  | 8x15   |       | 10 |
| 1164TR81738  | 8x17   |       | 10 |
| 1164TR101538 | 10x15  | G3/8" | 10 |
| 1164TR101738 | 10x17  |       | 10 |
| 1164TR101938 | 10x19  |       | 10 |

 diritto maschio gigante cilindrico BSPP portagomma • *large male connector BSPP thread with rubber hose connector*
**1292**

**NEW**

| CODE         | Ø Tubo | T     |    |
|--------------|--------|-------|----|
| 1292TR101938 | 10x19  |       | 10 |
| 1292TR102038 | 10x20  |       | 10 |
| 1292TR102138 | 10x21  | G3/8" | 10 |
| 1292TR102238 | 10x22  |       | 10 |
| 1292TR102338 | 10x23  |       | 10 |
| 1292TR131912 | 13x19  |       | 10 |
| 1292TR132012 | 13x20  |       | 10 |
| 1292TR132312 | 13x23  | G1/2" | 10 |
| 1292TR132412 | 13x24  |       | 10 |
| 1292TR132512 | 13x25  |       | 10 |

 rubinetto a corsoio attacco baionetta portagomma • *sliding tap bayoned joint with rubber hose connector*
**1278**

**NEW**

| CODE       | Ø Tubo |    |
|------------|--------|----|
| 1278TR612  | 6X12   | 10 |
| 1278TR614  | 6X14   | 10 |
| 1278TR817  | 8X17   | 10 |
| 1278TR1019 | 10X19  | 10 |

**2610**

 rondella nylon dentellata  
*nylon notched washer*  
 Pag. 223

**R-PTFE**

 nastro teflon  
*teflon tape*  
 Pag. 222